

Eir Collection
Classic Wood
Stone
Square Tile
Herringbone

Leading flooring into new era

 **Kingdomflooring**
FLOORS www.kingdomflooring.com.cn

Zhejiang Kingdom Plastics Industry Co., Ltd

No. 38 Desheng Road, Heshan Town,
Tongxiang City, Jiaxing City, Zhejiang
Province, 314512, China

Tel: 86-573-89383298 Fax: 86-573-89383289
E-mail: Sales@kingdomflooring.com.cn



Kingdo mfloor

Kingdomfloor
Leading flooring into
new era

Change the
floorcovering to meet
your personality

Make full use of the
ground and make the space
as you desire

A desired
catalogue here to meet
your imagination

ABOUT US

Beautify The World With Style

At present, Kingdomfloor is ranked as one of the leaders in vinyl flooring in China both in terms of production capacity and in terms of product quality.

120,000

covering a land-area of about 120,000 square meters

45

The annual production capacity reaches 45 million square meters



INDUSTRY LEADER

Kingdomfloor has been involved in the manufacturing and exporting vinyl flooring since 1992. With its technically advanced production equipment, professional technical staffs and experienced sales team, Kingdomfloor has maintained its position at the forefront of the vinyl flooring business.

POWERFUL

Kingdomfloor has to date invested a large amount in its production facility, covering a land-area of about 120,000 square meters and 24 LVT hotpressing machines, 29 SPC production lines, 6 WPC production lines. The annual production capacity reaches 45 million square meters.



BEST SUPPLIER

Kingdomfloor has both normal series for residential use and luxury series for commercial use. With authentic looks of wood planks and stone tiles, Kingdomfloor makes each individual tile and plank as a piece of art with emotion of life. Till now, Kingdomfloor has exported to more than 30 countries such as USA, Canada, Germany, UK, Austria, etc. and has a proven reputation.

Kingdomfloor is willing to be your potential and best supplier, and will be very appreciative to receive any inquiries from you. The motto of Kingdomfloor is "Beautify the world with style! "

**Kingdomfloor
Paves The Future Of The
World With You**



Leave The Forest
To The Nature & Let The Human
Enjoy The Green World

F O R E S T

**WE CHERISH MORE
TO THE ENVIRONMENT**

We insists to our enterprise mission of leaving the forest to the nature and let the human enjoy the green world, no forest destroy, no environment pollution while to offer the world with healthier, more environmental friendly floor coverings.

**WE TAKE GLOBAL
CERTIFICATES AS DUTIES**

LVT, WPC, SPC and ESPC product from Kingdomfloor has already got many certificates such as Floorscore, ASTM, TUV and CE. All the raw materials we used in production processes and its effect to the environment are open to all.

**WE CONCERN
MORE WITH YOUR HEALTH**

As for the safety of the floor covering, from the raw material to the production process, be rest assured that Kingdomfloors will never add any harmful ingredient to ensure the safety of the floor piece.



LEADING FLOORING INTO NEW ERA



NIK9653

KINGDOMFLOOR 05/06

NATURE

Getting Inspiration From The Nature

Our design search for the inspiration from the Nature. We have elegant wood design and exquisite stone designs. You could feel the wood texture and knots with our EIR embossing surface.

TREND

Beyond Imagination , Pursue Individualism

Combination of parquet design, mixed color, herringbone, random widths.. seeing the fashion from the floor design and making your own DIY fashion space

AESTHETICS

Ground Is A Kind Of Aesthetics

Authentic nature designs, the integral unity of layout and take aesthetic control of the space into consideration, those give birth to a magnificent chapter of art on the ground.



Brand New Ingenious Floor Designs

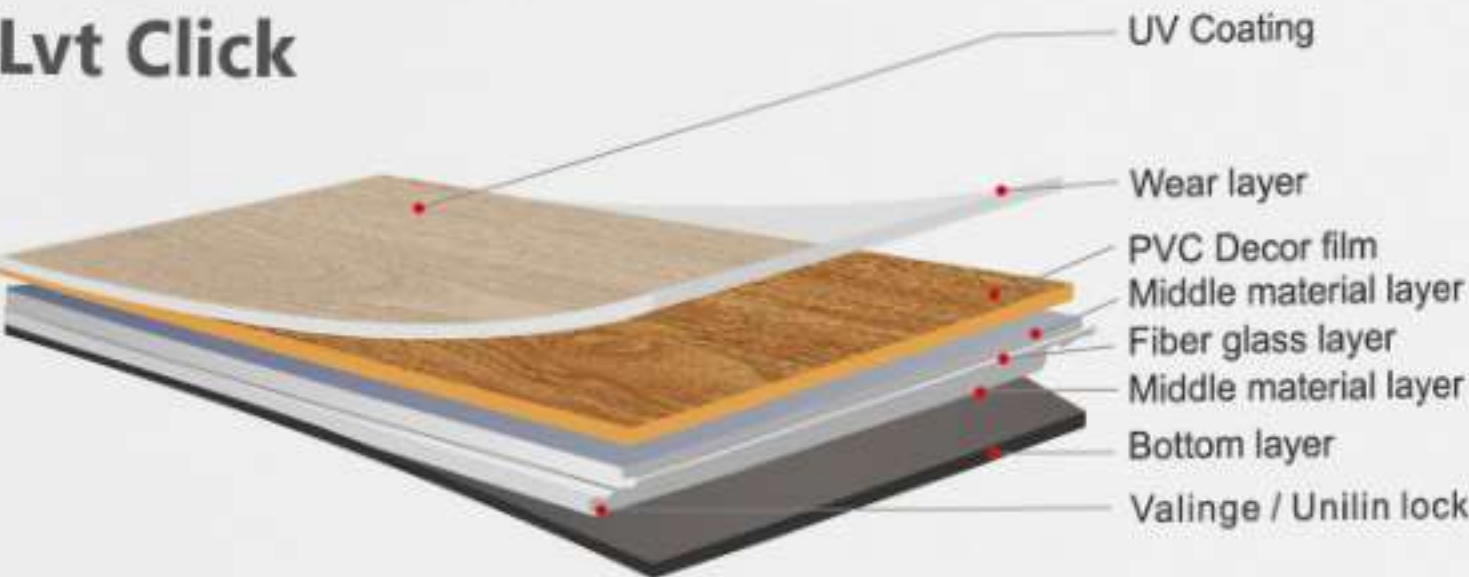
Enjoy Your Floor World

NIK18205

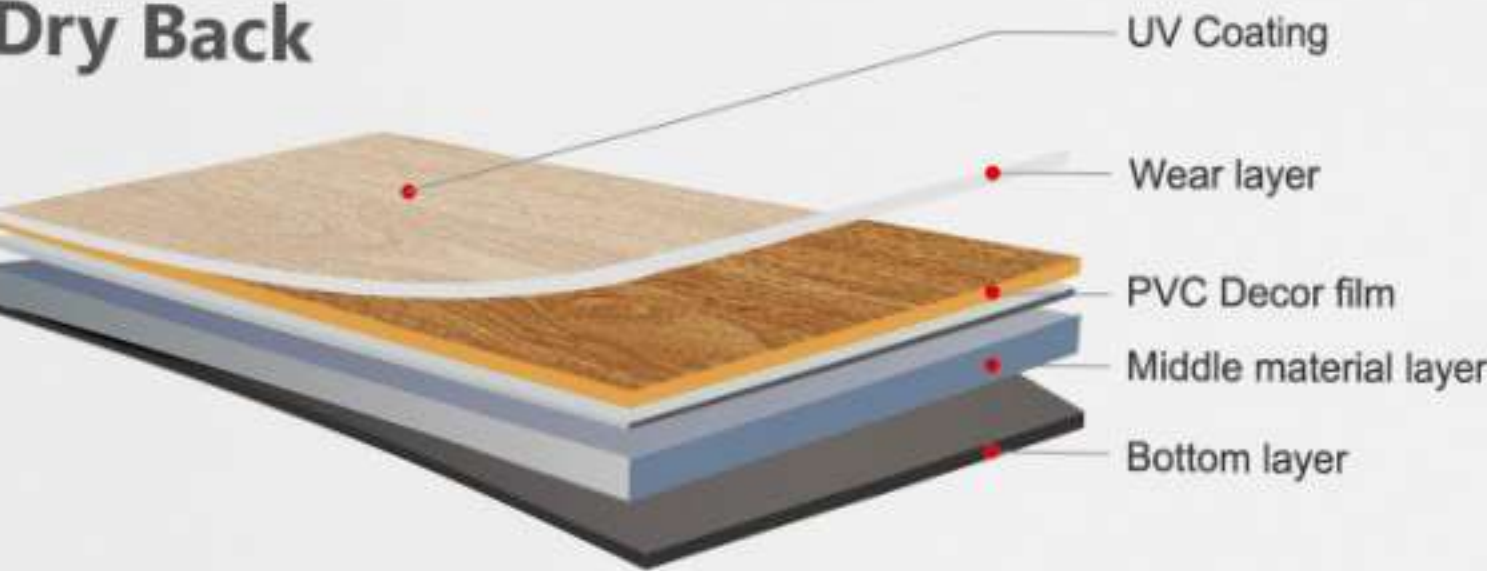
GENERALLY USED-LVT

The LVT collection brings a trendy variety of wood decors available in registered embossing and XL format. With realistic surface textures, the collection allows you to see the grains and knots just like real woods. It is suitable both for the home and commercial areas. You also have a choice when it comes to installation: all design are available for gluing, loose lay and innovative click systems

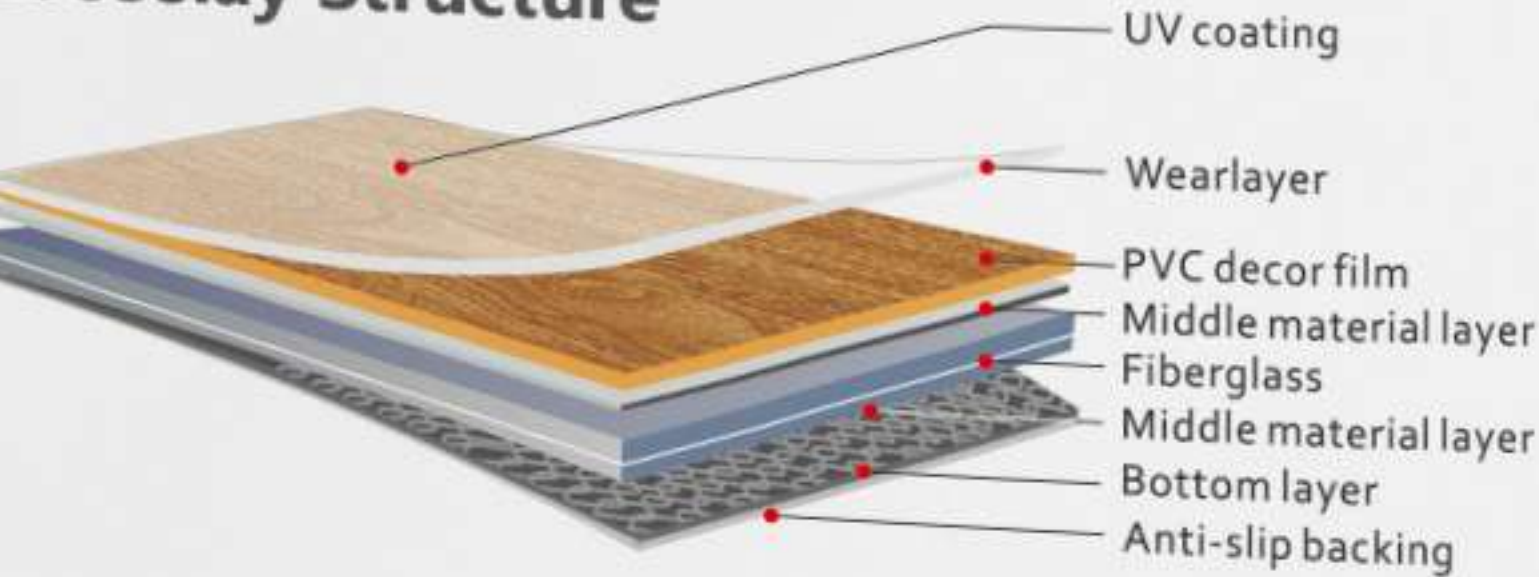
Lvt Click



Dry Back



Looselay Structure



LVT - PLANK



1219.2mm*152.4mm



1227mm*187mm



1219.2mm*228.6mm



1520mm*238mm



1840mm*237mm

LVT - TILE



304.8mm*304.8mm



609.6mm*304.8mm



457.2mm*457.2mm



914.4mm*457.2mm

TECHNICAL DATA

Thickness		2.0-5.5mm
Density		1.8~2.02g/cm3
Wearlayer		0.3/0.5/0.7mm
Dimensional stability	ISO23999:2008	X Direction: 0.12% Y Direction: 0.10%
Curling	ISO23999:2008	≤0.2mm
Residual indentation	ISO 24343-1:2007	~0.04mm
Light stability	ISO105-B02:Method 3	≥6
Castor chair	EN 425	Typ W
Classification	EN ISO 10582	23,31/33, 42/34,43
Reaction to fire	EN 13501-1	Bfl-S1
Slip resistance	DIN 51130 EN 13893	R10 DS
Wear resistance	EN 660-2	Group T
Thermal resistance	EN 12667:2001	0.074m²K/W
Determination of resistance to stains chemical rsistance	ISO26987:2008	Resistant
Squareness	ISO24342:2007	Deviation range: X Direction: 0.00mm~+0.05mm Y Direction:0.00mm~+0.05mm
Straightness	ISO24342:2007	Deviation range: X Direction: 0.00mm~+0.03mm Y Direction:0.00mm~+0.05mm
Flexibility	ISO 24344:2008 Method A	There was no cracking shown in both directions when tested with a 20mm mandreal
Peel resistance	ISO 24345:2006	X Direction: 65N/50mm Y Direction: 65N/50mm
Burning cigarette test	EN1399:1997 Method B	Rating 3: Moderate change of gloss and moderate brown stain
Utilization		Recyclable



MOST POPULAR-SPC

SPC is a particularly new product in the flooring industry. It not only gathers most of the current flooring material, but also provides better performance of being water-proof, rigid, dimensionally stable, and relatively environmentally friendly. Thus it can be safely used in areas with sustained exposure to moisture, such as bathroom, laundry room and kitchen. With good rigidity, SPC provides a quieter, warmer vinyl flooring with a cushioned backing attached, thus eliminating the imperfections from the subfloor which is normally transferred through LVT. SPC is available with locking system.

Rigid vinyl structure



SPC - PLANK



1220mm*180mm



1220mm*229mm



1511mm*229mm



1830mm*228mm

SPC - TILE



610mm*305mm



457mm*457mm



914mm*457mm

TECHNICAL DATA

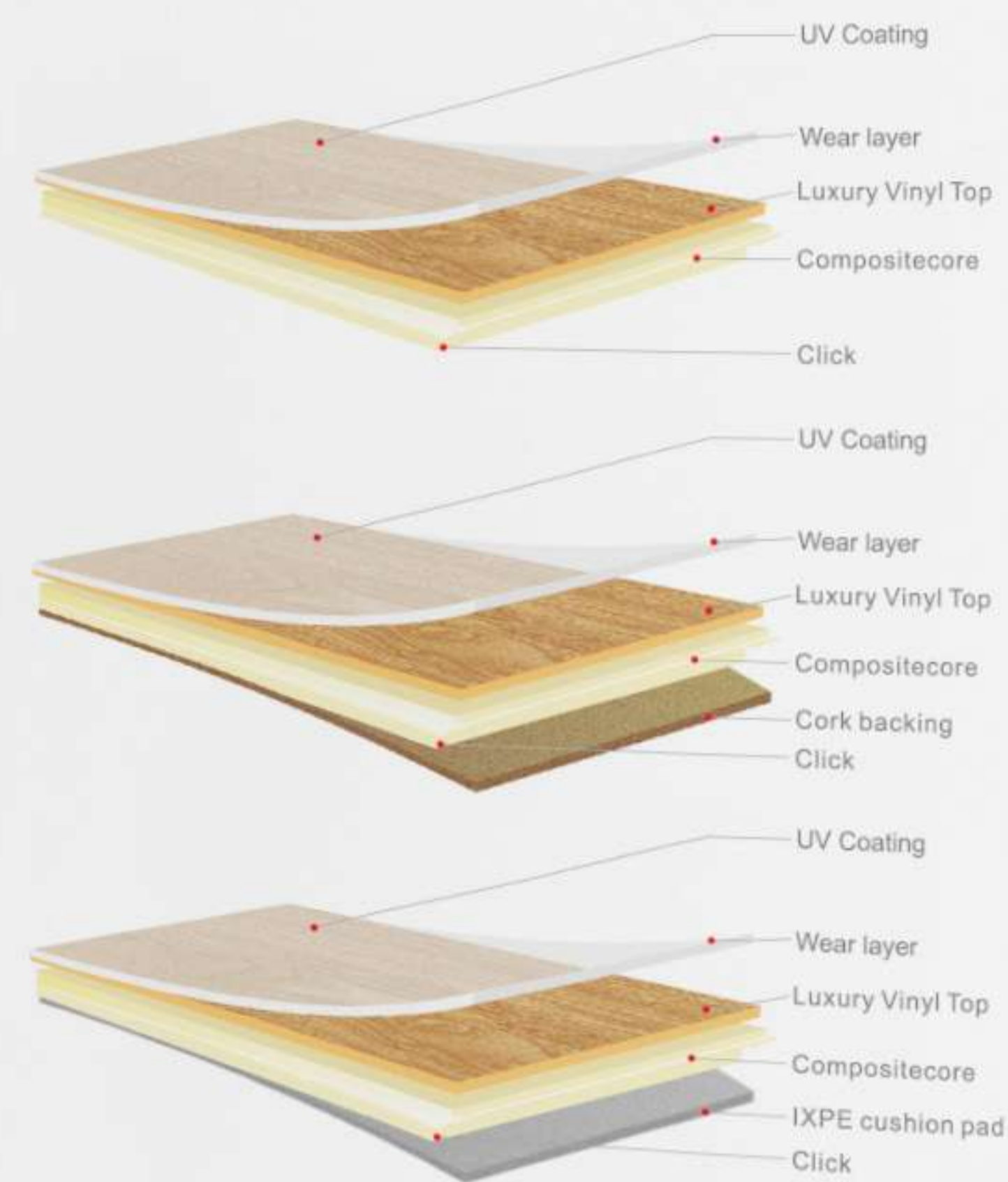
Thickness		3.2-5.0mm
Density		1.95~1.97g/cm3
Wearlayer		0.3/0.5mm
Dimensional stability	ISO23999:2008	X Direction: 0.08% Y Direction: 0.07%
Curling	ISO23999:2008	≤1.0mm
Residual indentation	ISO 24343-1:2007	~0.01mm
Light stability	ISO105-B02:Method 3	≥6
Castor chair	EN 425	Typ W
Classification	EN ISO 10582	23,31/33, 42
Reaction to fire	EN 13501-1	Bfl-S1
Slip resistance	DIN 51130 EN 13893	R10 DS
Wear resistance	EN 660-2	Group T
Thermal resistance	EN 12667:2001	0.038m²K/W
Determination of resistance to stains chemical rsistance	ISO26987:2008	Resistant
Squareness	ISO24342:2007	Deviation range: X Direction: 0.00mm~+0.05mm Y Direction:0.00mm~+0.05mm
Straightness	ISO24342:2007	Deviation range: X Direction: 0.00mm~+0.03mm Y Direction:0.00mm~+0.05mm
Peel resistance	ISO 24345:2006	X Direction: 65N/50mm Y Direction: 65N/50mm
Burning cigarette test	EN1399:1997 Method B	Rating 3: Moderate change of gloss and moderate brown stain
Utilization		Recyclable



HIGH-END - WPC

WPC is a collection of Acoustic Vinyl CompositeCore click product, which is a new revolution of LVT. It is a perfect alternative to LVT or laminate flooring. It is an engineered flooring product that consists of a lvt top layer, compositecore and cork backing with click system. With vinyl on top, it provides a durable and resilient performance; Compositecore is an extruded layer which is waterproof with excellent dimensional stability; and cork backing ensures superior sound insulation performance.

Acoustic Vinyl Compositecore WPC-Click Structure



1220mm*150mm



1220mm*180mm



1220mm*229mm



1511mm*229mm



1830mm*228mm



2230mm*228mm

TECHNICAL DATA

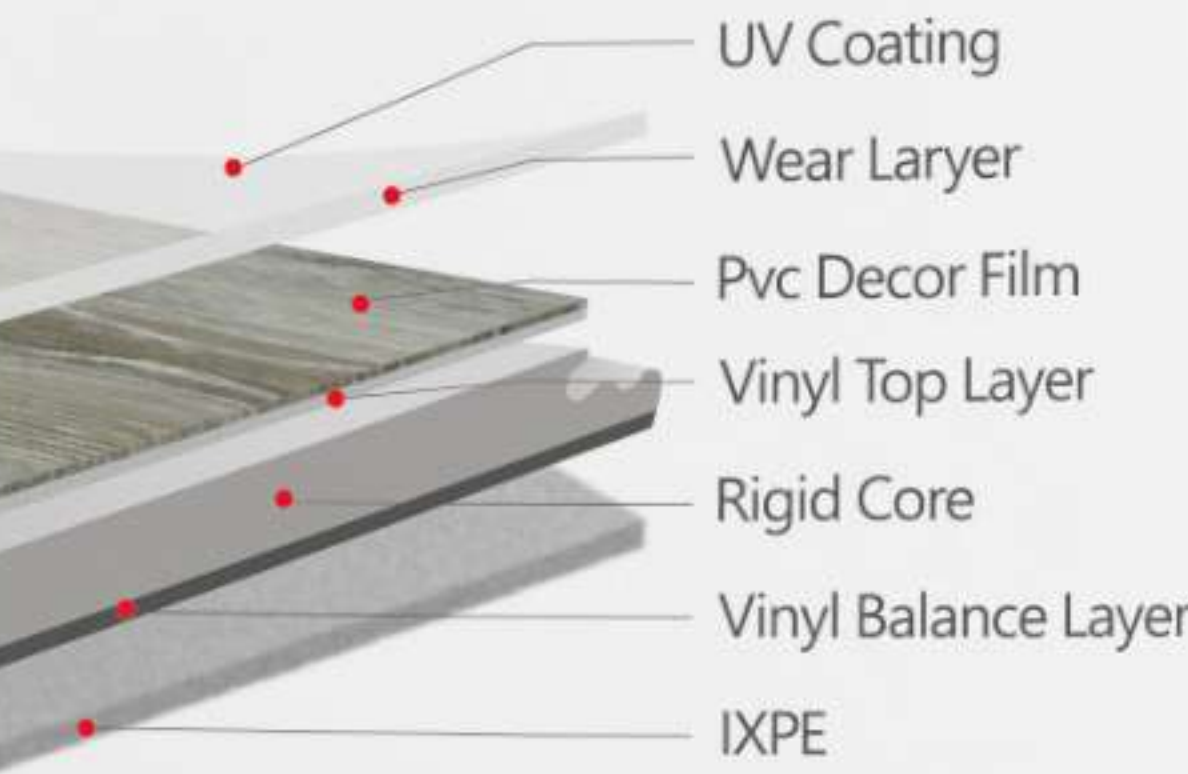
Thickness		5.5-8.5mm
Density		0.95~1.2g/cm3
Wearlayer		0.3/0.5/0.7mm
Dimensional stability	ISO23999:2008	X Direction: 0.18% Y Direction: 0.18%
Curling	ISO23999:2008	≤2.0mm(70℃)
Residual indentation	ISO 24343-1:2007	~0.08mm
Light stability	ISO105-B02:Method 3	≥6
Castor chair	EN 425	Typ W
Classification	EN ISO 10582	23,31/33, 42/34,43
Reaction to fire	EN 13501-1	Bfl-S1
Slip resistance	DIN 51130 EN 13893	R10 DS
Wear resistance	EN 660-2	Group T
Thermal resistance	EN 12667:2001	0.065m²K/W
Determination of resistance to stains chemical rsistance	ISO26987:2008	Resistant
Squareness	ISO24342:2007	Deviation range: X Direction: 0.00mm~+0.05mm Y Direction:0.00mm~+0.05mm
Straightness	ISO24342:2007	Deviation range: X Direction: 0.00mm~+0.03mm Y Direction:0.00mm~+0.05mm
Peel resistance	ISO 24345:2006	X Direction: 65N/50mm Y Direction: 65N/50mm
Burning cigarette test	EN1399:1997 Method B	Rating 3: Moderate change of gloss and moderate brown stain
Utilization		Recyclable



EVOLUTION-ESPC

Engineered Solid Plastic Composite(ESPC) combines advantages of both SPC and LVT, it remains the excellent dimensional stability, being water-proof , rigid of SPC,but also provides softness of LVT.With IXPE cushioned backing, ESPC provides a quieter, warmer vinyl flooring. ESPC is available with locking system and EIR embossing.

Engineered SPC



TECHNICAL DATA

Thickness	4.5-7.0mm	
Density	1.88~1.94g/cm3	
Wearlayer	0.3/0.5/0.7mm	
Dimensional stability	ISO23999:2008	X Direction: 0.03% Y Direction: 0.02%
Curling	ISO23999:2008	≤0.5mm
Residual indentation	ISO 24343-1:2007	~0.04mm
Light stability	ISO105-B02:Method 3	≥6
Castor chair	EN 425	Typ W
Classification	EN ISO 10582	23,31/33, 42/34,43
Reaction to fire	EN 13501-1	Bfl-S1
Slip resistance	DIN 51130 EN 13893	R10 DS
Wear resistance	EN 660-2	Group T
Thermal resistance	EN 12667:2001	0.042m²K/W
Determination of resistance to stains chemical rsistance	ISO26987:2008	Resistant
Squareness	ISO24342:2007	Deviation range: X Direction: 0.00mm~+0.05mm Y Direction:0.00mm~+0.05mm
Straightness	ISO24342:2007	Deviation range: X Direction: 0.00mm~+0.03mm Y Direction:0.00mm~+0.05mm
Peel resistance	ISO 24345:2006	X Direction: 65N/50mm Y Direction: 65N/50mm
Burning cigarette test	EN1399:1997 Method B	Rating 3: Moderate change of gloss and moderate brown stain
Utilization	Recyclable	

HERRINGBONE

Herringbone flooring is a pattern produced by alternating rows of strip flooring with an elegant, upscale flooring style. The zigzag-style pattern that a herringbone layout creates is incredibly eye-catching, and when you use high-quality flooring, this design can easily make a room stand out. With I4F new click system, it spends less effort to install this special flooring.

Herringbone dryback



95mm*380mm



119mm*595mm



153mm*612mm

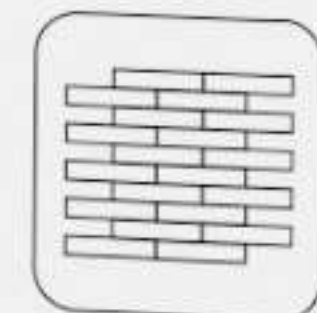
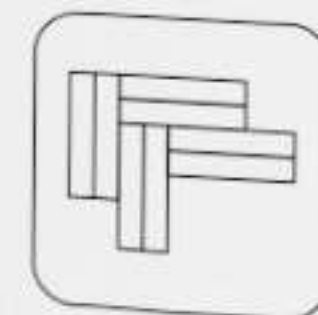
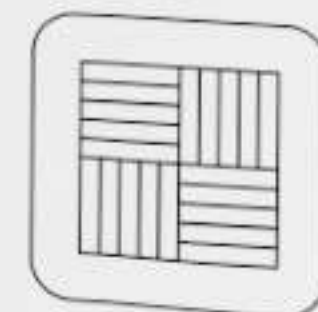
Herringbone Click



150mm*600mm



150mm*750mm



LEADING FLOORING INTO NEW ERA

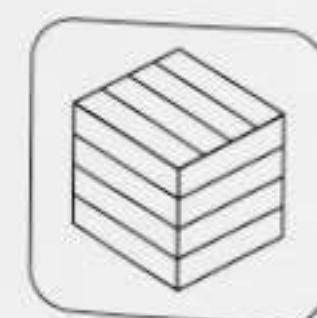
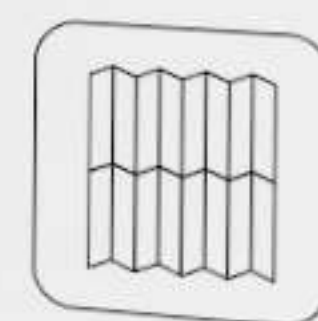
CHEVRON

Chevron flooring pattern originated in 17th century France, where it quickly became one of the most preferred types of floors in the palaces of the kings and nobility alike. The main difference between chevron and herringbone patterns is that the chevron planks are cut to ensure that each "zig" and "zag" are connected at a 45 degree angle.

Chevron dryback



134.5mm*538mm



KINGDOMFLOOR 25/26

LEADING FLOORING INTO NEW ERA

DIGITAL VISION

Kingdomfloor with a long history of environmental and innovated production, has been a forerunner to apply digital printing in SPC flooring and discover a new land of digital print products.



25 Pieces
No Repetition

Lower inventory cost

By having Digital Print we will be able to our lower Inventory costs as we can print on demand thus we will not have to carry large inventory of décor films. This helps both our customers and the company.

Farewell to minimum order quantity

The convenience that new technology brings is often breathtaking. Now, the customization of products is no longer limited by quantity. Under the technology of digital print, even one piece of plank can be quickly produced and processed.

Restore the natural texture both visually and tactilely

The texture and touch of digital print product can be compared with real materials. Extremely restore the true touch and texture, and even the embossing of the material surface is vividly displayed.

Alleviate flooring repeat problem

Repetition of patterns is a big problem of traditional flooring designs. Under the technological innovation of digital print, 36-48 pieces (Evenmore) Non-Repetition can be achieved according to the different sizes of floor.



LEADING FLOORING INTO NEW ERA

WALL PANEL

Kingdom SPC rigid wall panel are water-resistant and very easy to clean and look after. They are ideal choice for cladding walls in bathrooms, toilets, kitchens, basements, garages and all othe living areas. With unique joining system, wall panels are connectable along all sides and the tile grooves are concealed within the panel, providing a very authentic feeling.



300*600



450*900



600*1200



800*2400

● ● KINGDOMFLOOR 29/30



MOLDING

PVC flooring accessories include PVC skirting board, Flush Stair Nose, T-moulding, End cap, Reducer, Stairnose etc. It's fireproof, waterproof, environmental friendly, easy setting and cleaning, not easily deformed, wear resistant, High intensity, sound insulation, resist erosion, anti aging.



END CAP

End cap is used as the finishing touch of the flooring edge at outside doors. We can match end cap moulding with the color of your floor.



FLUSH STAIR NOSE

Flush Stair Nose can join your SPC/W-PC flooring directly with the click system.



REDUCER

Reducer is used to create a smooth transition between two floors of different heights, as well protect the planks.



SKIRTING

Skirting board is used around the edge of the room to hide the expansion gap between flooring and wall.



STAIR NOSE

Stair Nose combines style and function to enhance the beauty of a staircase or step.



T-Molding

T-Moldings are commonly used in doorways to join two floors in adjoining rooms.





NIK18204

EIR COLLECTION

Touch The Reality

KingMax

Pattern Repeat length: 1890mm

EIR collection in particular offers plenty of wood designs available for EIR embossing in 3 different formats. This means any grain or knot can be touched, making it truly authentic and distinctive.



NIK18133



NIK18110



NIK18113



NIK18199



NIK18265



NIK1818230



NIK182848



NIK18284



NIK182842



NIK1828410



NIK18149



NIK18218



NIK18275



NIK18281

LEADING FLOORING INTO NEW ERA

KingMax

Pattern Repeat length: 1890mm



NIK18083



NIK18082



NIK18063



NIK18071



NIK18084



NIK18069



LEADING FLOORING INTO NEW ERA



NIK18218

KingMax

Pattern Repeat length: 1890mm



NIK183011



NIK183013



NIK183015



NIK153018



NIK18030



NIK18133



NIK18031



NIK18034



NIK18110



NIK18113

LEADING FLOORING INTO NEW ERA

KingSize

Pattern Repeat length: 1570mm



NIK15397



NIK15185



NIK15396



NIK153966



NIK153968



NIK15327



NIK15300



NIK1532619

KINGDOMFLOOR 41/42



NIK15185

LEADING FLOORING INTO NEW ERA

KingSize

Pattern Repeat length: 1570mm



NIK15081



NIK98271



NIK15059



NIK15070



NIK15169



NIK98273



NIK98275



NIK98277



KINGDOMFLOOR 43/44

NIK15319

LEADING FLOORING INTO NEW ERA

KingSize

Pattern Repeat length: 1570mm



NIK1543818



NIK1543820



NIK1543811



NIK1543819



NIK15319



NIK154611



NIK15320



NIK15322



NIK154612



NIK154614



KINGDOMFLOOR 45/46

NIK15322

LEADING FLOORING INTO NEW ERA

KingSize

Pattern Repeat length: 1570mm



NIK15143



NIK15152



NIK15442



NIK15444



NIK15451



NIK15452



NIK15452



NIK15320

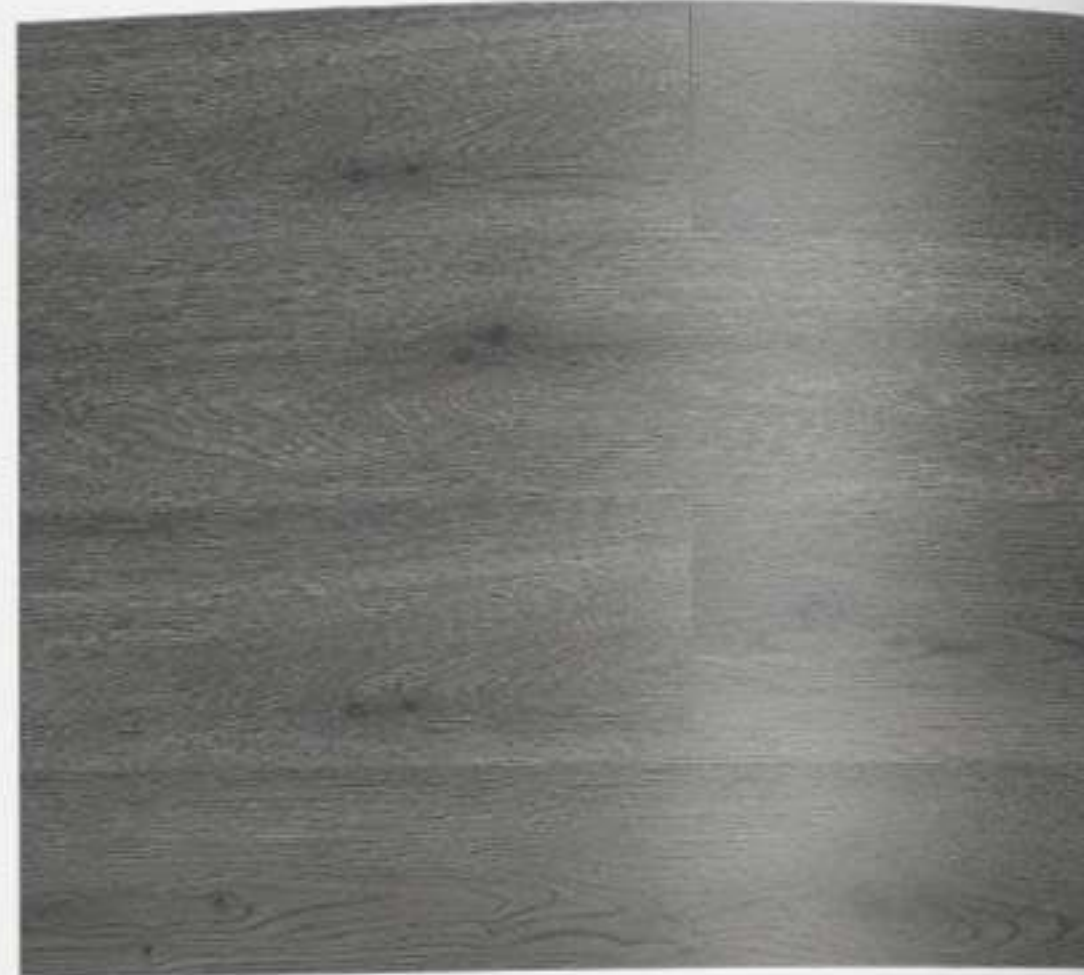
LEADING FLOORING INTO NEW ERA

Standard

Pattern Repeat length: 1270mm



NIK67287



NIK98296



NIK6728



NIK981013



NIK98292



NIK98295



NIK68753



NIK68756



NIK68755



NIK68754



KINGDOMFLOOR 49/50

NIK9714

LEADING FLOORING INTO NEW ERA

Standard

Pattern Repeat length: 1270mm



NIK9655



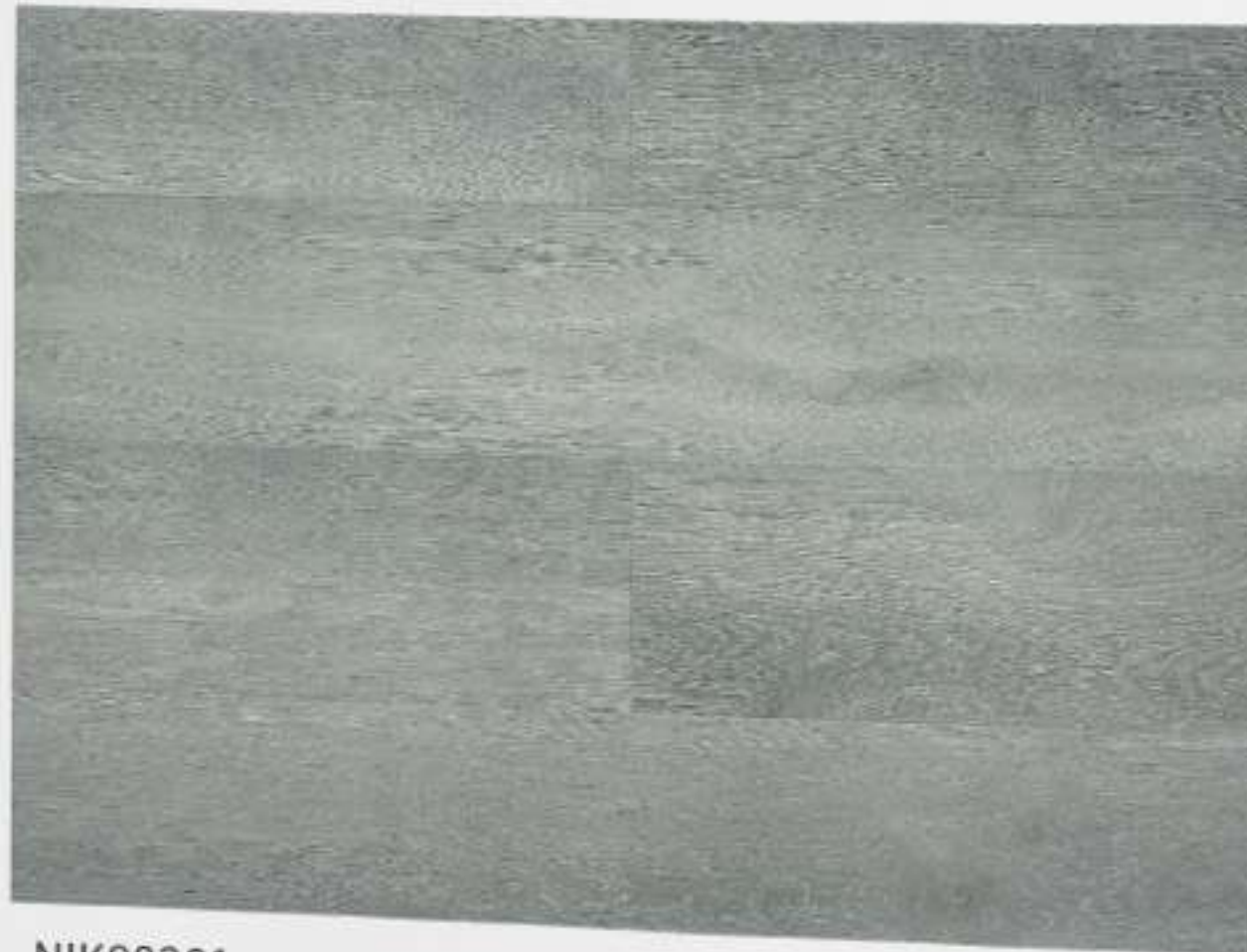
NIK9657



NIK9656



NIK9658



NIK98281



NIK9659



NIK98282



NIK98284



NIK9653



NIK9654



KINGDOMFLOOR 51/52

NIK9419

Standard

Pattern Repeat length: 1270mm



NIK9580



NIK9645



NIK9560



NIK6728



NIK9321



NIK8498



NIK8496



NIK9569



NIK8499



NIK6757

CLASSIC WOOD

CLASSIC WOOD

Trend Originated From Classics

The classic wood collection is available in all product types, which many styles and colors have been combined, offering limitless opportunities for different designs.



NIK6730



NIK6579



NIK6756



NIK68661



NIK68662



NIK68663



NIK6442



NIK6445



NIK69182



NIK69183



NIK159598



NIK154596



NIK154575



NIK154573

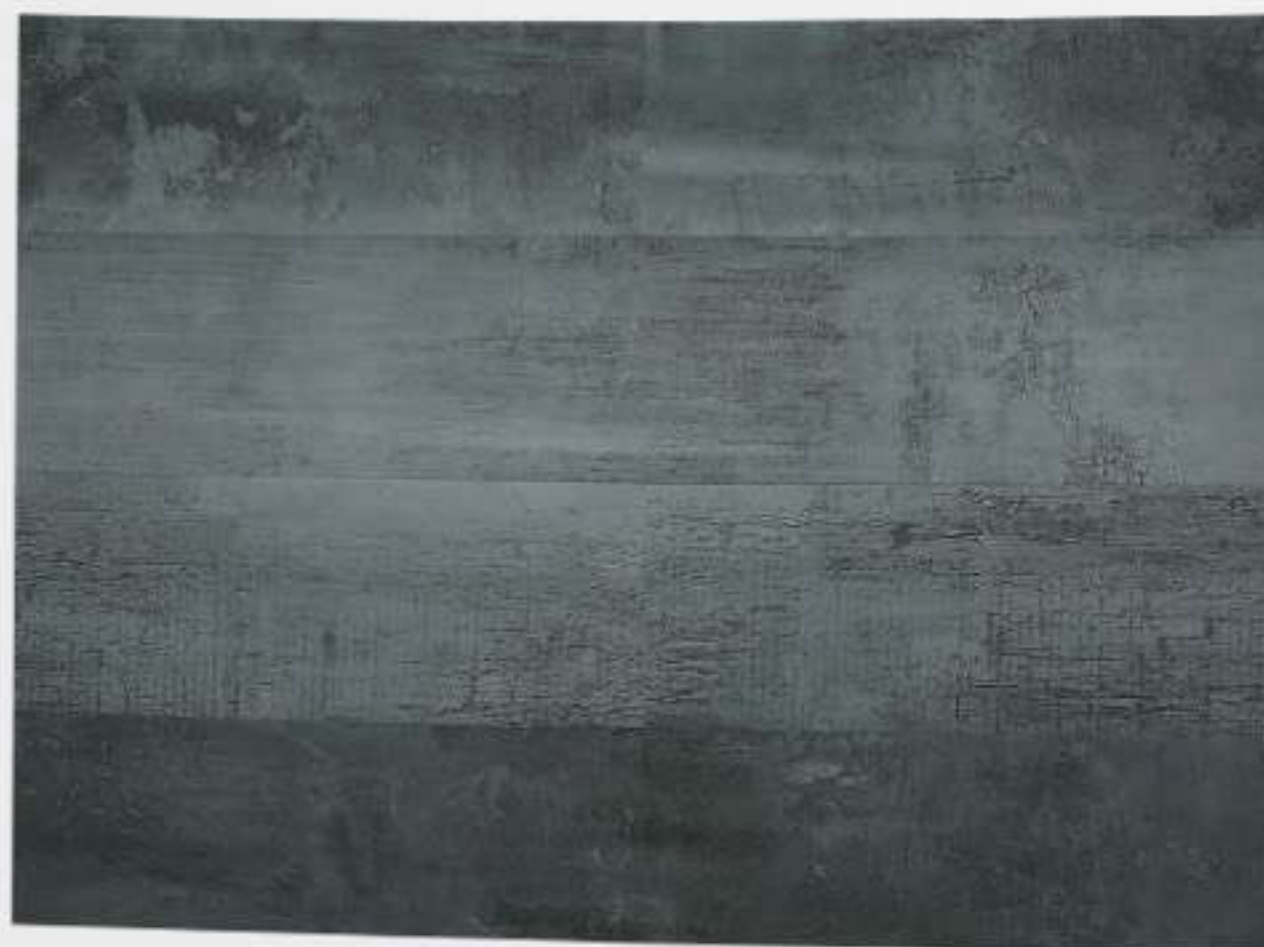
LEADING FLOORING INTO NEW ERA



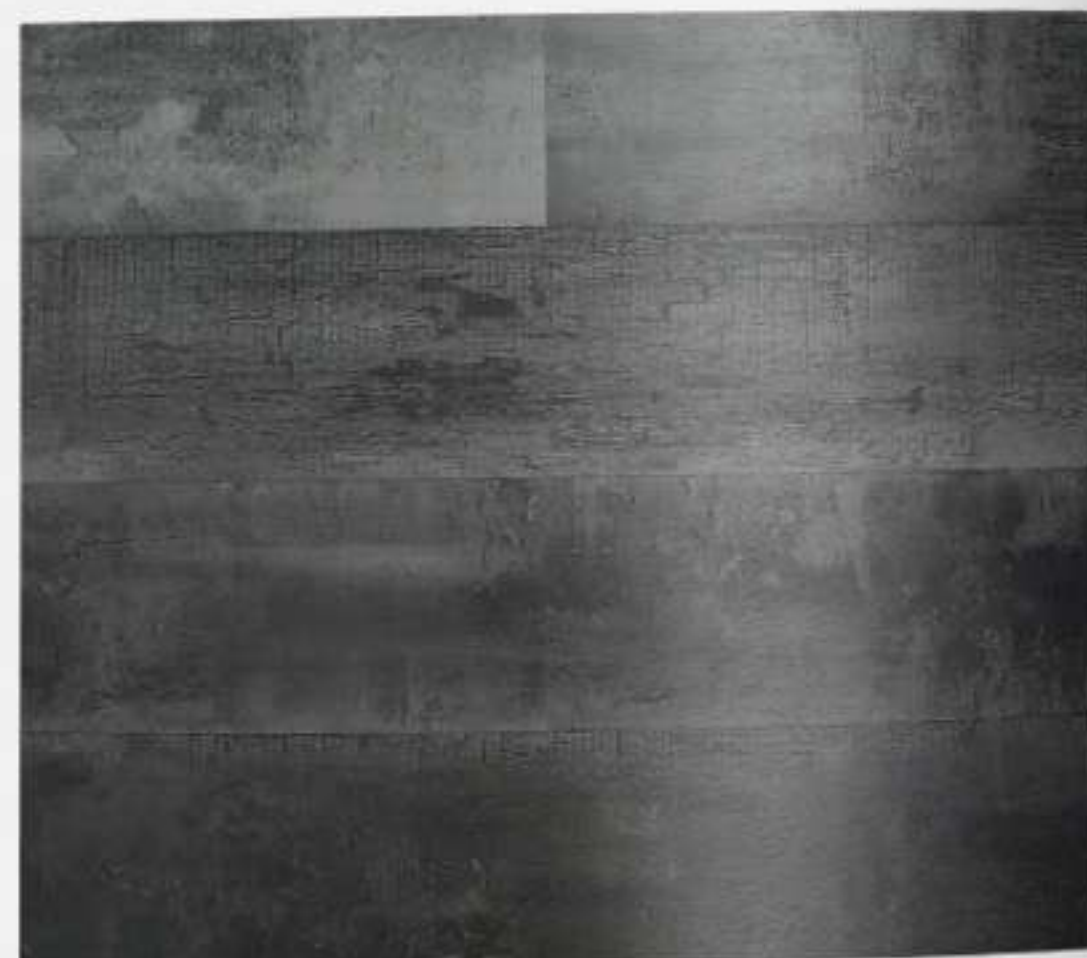
NIK154552



NIK154557



NIK37392



NIK37395



NIK6852



NIK154582



NIK6444



NIK6579



NIK154561



NIK69241



NIK8511



NIK6627



NIK154531



NIK684111



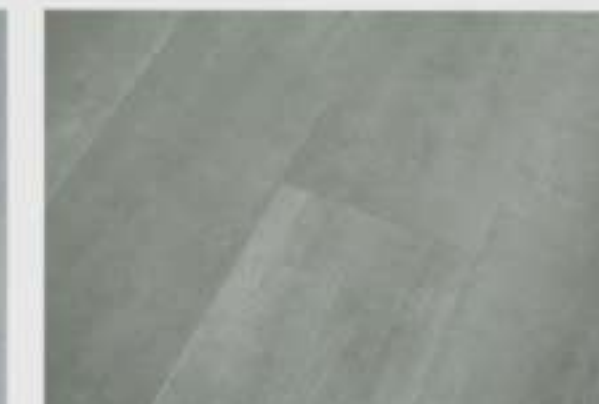
NIK154534



NIK154535



NIK68411



NIK68412



NIK154536



NIK154538



NIK68415



NIK68413

LEADING FLOORING INTO NEW ERA

KINGDOMFLOOR 61/62

NIK37289



LEADING FLOORING INTO NEW ERA

KINGDOMFLOOR 63/64

STONE

Inspiration From The Earth

Simulates natural texture with the delicate softness of carved stone. Stain and wear-resistant and safe from radiation unlike natural stone, which is used for luxurious hotels and decorating residential and commercial spaces.

NIK3415



NIK372811



NIK37281



NIK37285



NIK37287



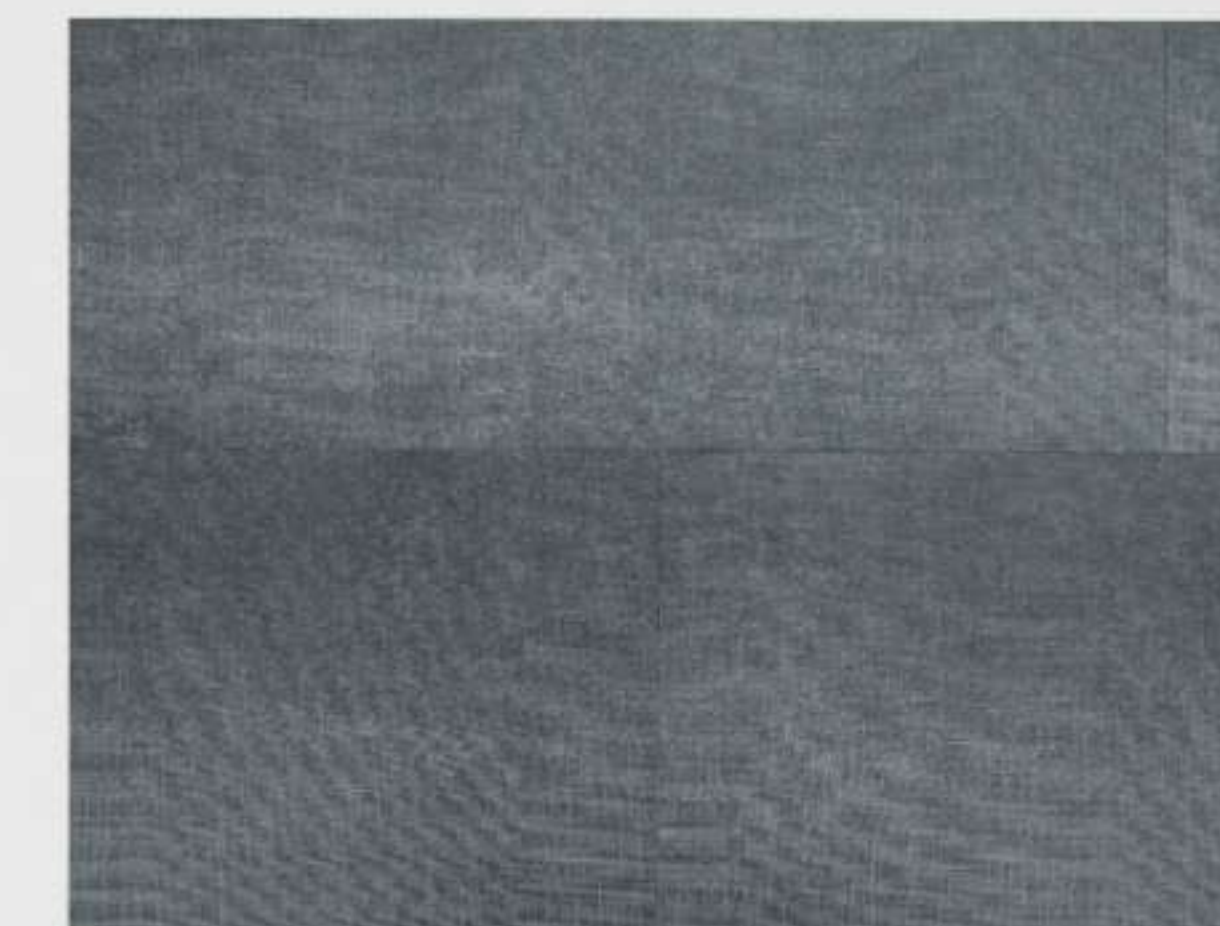
NIK37583



NIK37581



NIK375812



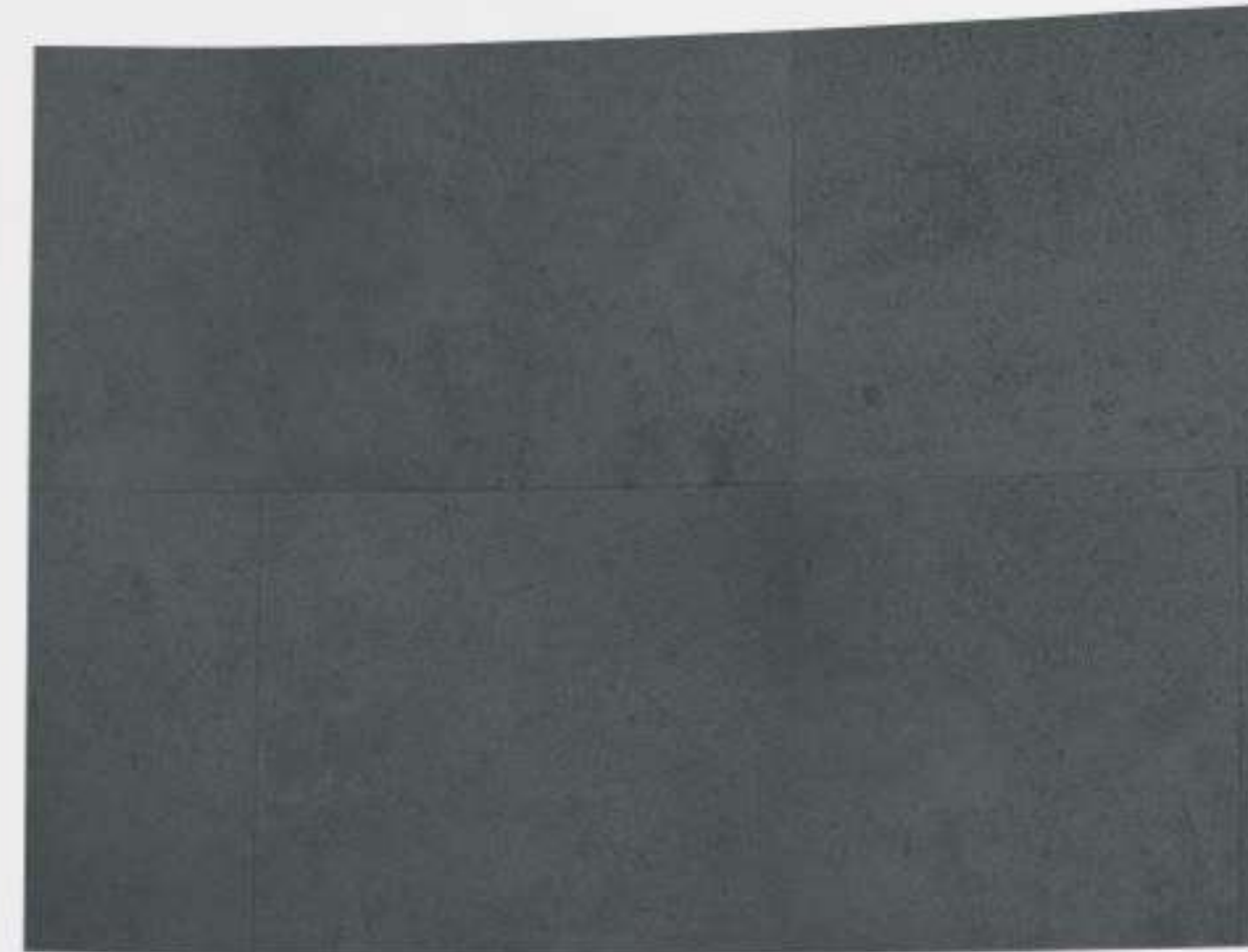
NIK37855



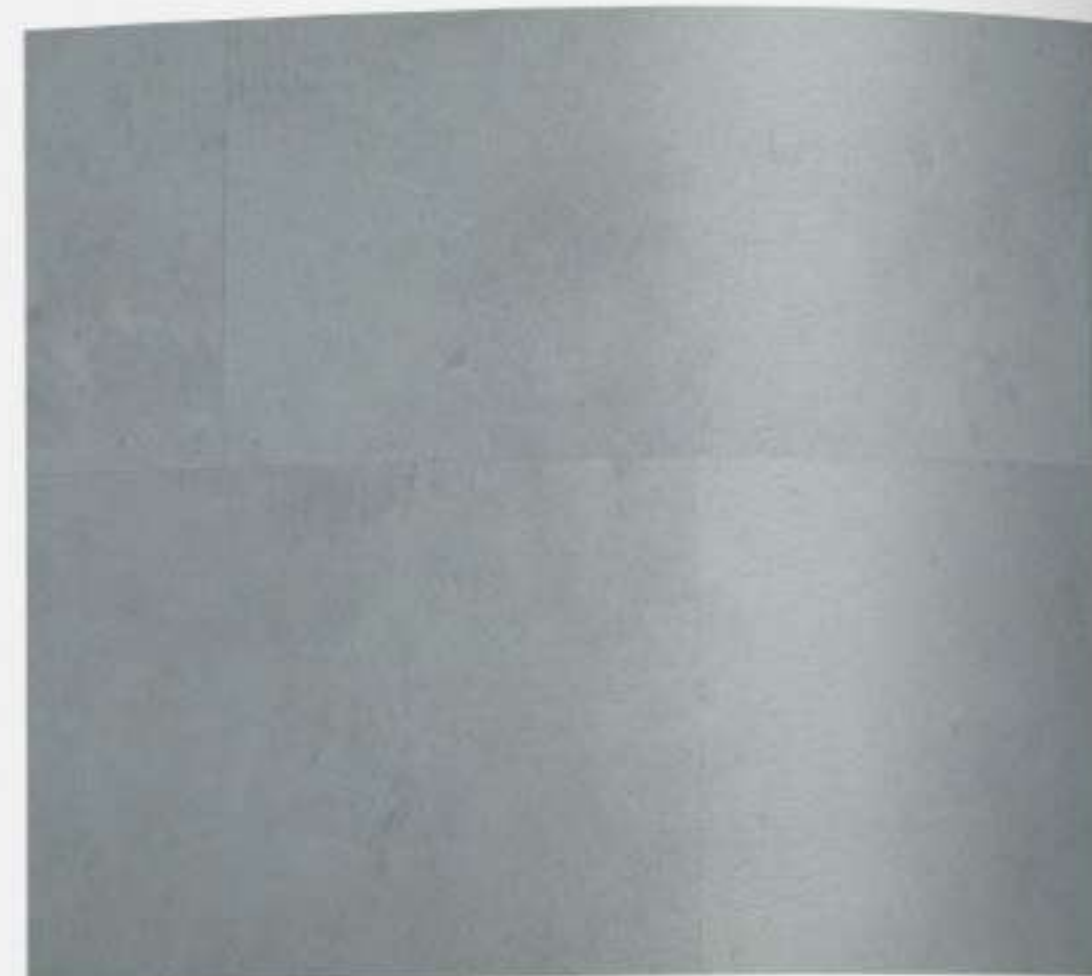
NIK37851



NIK37852



NIK3775



NIK37754



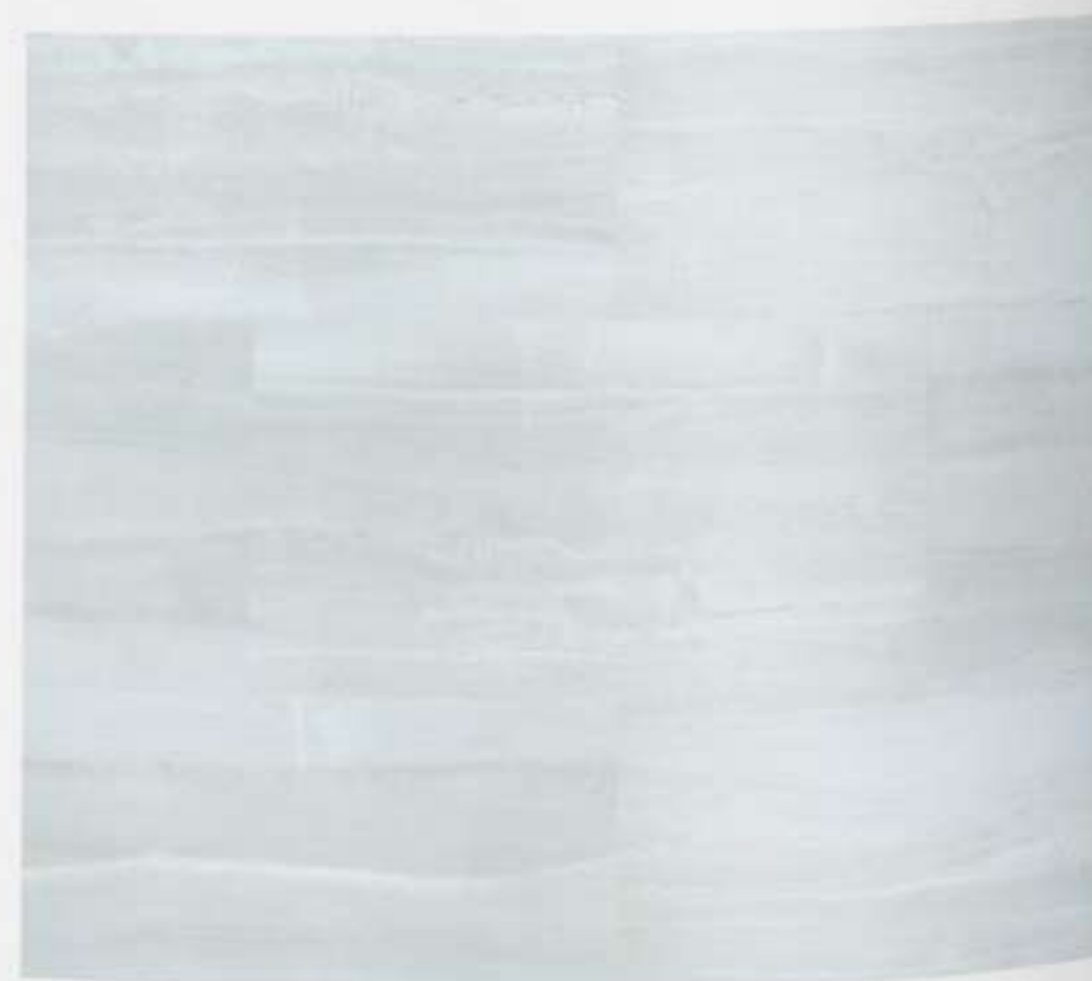
NIK37903



NIK37905



NIK37558



NIK37553



NIK3490



NIK38545



NIK3558



NIK38548



NIK385411



NIK3527



NIK35587



NIK36136



NIK3613



NIK3652



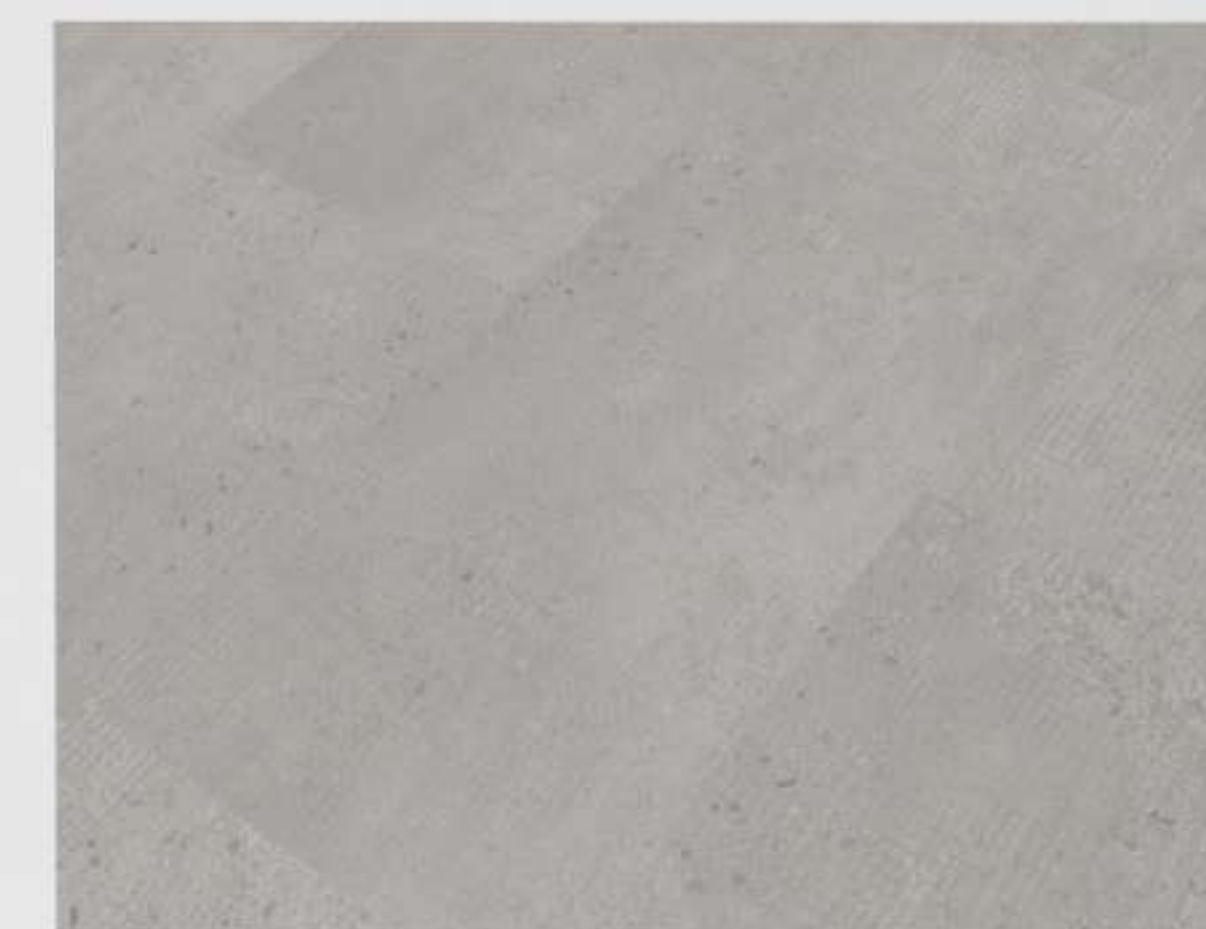
NIK3651



NIK382512



NIK3746



NIK38575





NIK38273



NIK38271



NIK38274



NIK38279



NIK38253



NIK38256



NIK382512



NIK3746

LEADING FLOORING INTO NEW ERA



NIK38384



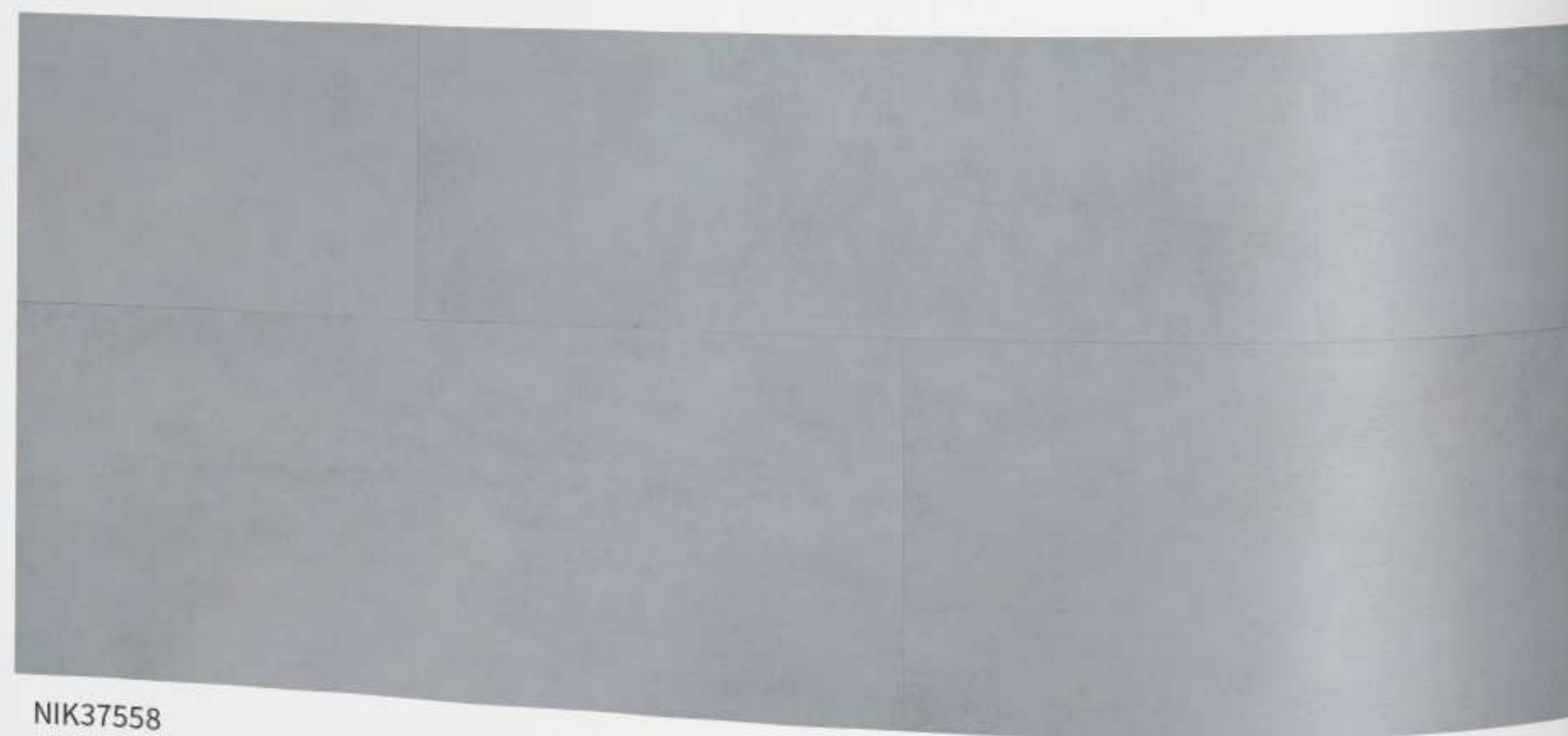
NIK38387



NIK38581



NIK38586



NIK37558



NIK38113

SQUARE TILE

Regeneration Of Ceramic Art

Square tile designs are especially produced for precise 24"x24" format tile , this big size tile creates an impressive and outstanding environment which is normally created by ceramic tiles ,applicable for both residential and commercial spaces.



NIK38117



NIK381112



NIK381010



NIK38102



NIK38225



NIK38228



NIK38234



NIK38235



NIK3778



NIK3778



NIK38214



NIK38211



NIK38212



NIK38215



NIK38231



NIK38225



NIK382310



NIK2746



NIK38242



NIK38401



NIK38402

HERRINGBONE



NIK8854



NIK8940



NIK8850



NIK8655



NIK9678



NIK9656



NIK9714



NIK9533

Unique Zigzag Craft



NIK15209



NIK154261



NIK154262



NIK15185



NIK15327

According to different styles based on wood designs and stone designs ,Kingdom gives various embossing recommendations to match the design, and ensure the best aesthetic feeling created by embossing.

AVAILABLE EMBOSS COLLECTION



Concrete



Leather



OrangePeel



Sandy



Shale



Travertine



BP-R



BP-S



Handscraped-A



Handscraped-B



Registered



SawCut



WI



WoodTick